

FREIGHTMASTER CX

RESILIENT SOLID TYRES

Watts Industrial Tyres is the UK Market Leader and one of the leading global producers of solid industrial tyres and wheels, prominent in over fifty overseas markets. In order to maintain its position as a Market Leader, Watts has made a recent addition to its already extensive product range. The 'FREIGHTMASTER CX' is a high performance product, designed to meet specific customer needs across all areas of the materials handling industry.

FEATURES & BENEFITS

- 100% Natural rubber Content
- Three compound construction
- Excellent shock absorption
- Creel bead wires to prevent rim slippage
- Square tread profile
- Large footprint
- Reduced ground pressure
- Low rolling resistance
- Designed for long and short haul applications
- Suitable for both Split and Lock Ring type wheels
- Also available in 'Limpet' (use without Lock Ring)



Tomorrow's Technology Today

APPLICATIONS

- IC and Electric Fork Lift Trucks
- Access Equipment
- All Materials Handling Applications
- Port, Ro-Ro and Ground Support Equipment
- Trailers



CERTIFICATE NO. Q/09672
BSEN ISO 9002



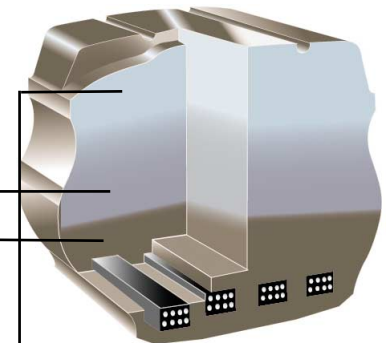
Watts
Industrial Tyres

Moving on Success

FREIGHTMASTER CX SPECIFICATIONS

Size	Rim Size	Tread Pattern	Load Capacity Fork Lift Trucks Up to 25 Kph : 16 mph		Weight Kgs	Overall Diameter mm	Overall Width mm
			Load Wheels	Steer Wheels			
			Kgs	Kgs			
4.00-8	3.00 D-8	QZ2	950	730	10.50	406.00	103.00
4.00-8	3.00 D-8	RIB	950	730	10.50	406.00	101.00
*15X4.5-8	3.00/3.25 D-8	QZ2/QZ4	1040	800	9.50	374.00	111.00
*16X6-8	4.33 R-8	QZ4	1270	975	14.70	405.00	140.00
*5.00-8	3.00 D-8	QZ2	1420	1090	15.70	447.50	124.00
*18X7-8	4.33 R-8	QZ4	2145	1650	20.30	452.00	141.50
*6.00-9	4.00 E-9	QZ2	1885	1450	24.20	523.00	133.00
*21X8-9	6.00 E-9	QZ4	2760	2120	35.00	525.00	192.00
*200/50-10	6.50 F-10	QZ4	2470	1900	23.50	448.00	195.00
*6.50-10	5.00 F-10	QZ2	2340	1800	32.00	567.00	152.00
*23X9-10	6.50 F-10	QZ4	3160	2430	43.00	567.00	199.00
*7.00-12	5.00 S-12	QZ2	2920	2240	46.00	650.00	168.00
*27X10-12	8.00 G-12	QZ4	3900	3000	70.50	663.00	248.00
7.00-15	5.5-15	QZ2	3545	2725	52.20	717.00	168.00
*28X9-15 (8.15-15)	7.0-15	QZ2	3445	2650	57.00	688.00	205.00
*250-15	7.0/7.5-15	QZ4	4745	3650	65.00	702.00	211.00
7.50-15	5.5-15	QZ2	3705	2850	61.00	735.00	191.00
7.50-15	6.5-15	QZ2	3900	3000	64.10	735.00	191.00
*8.25-15	6.5-15	QZ2	4745	3650	85.20	802.00	206.00
*300-15	8.0-15	QZ4	5850	4500	104.50	808.00	251.00
*350-15 (32X12.1-15) (355/65-15)	9.75-15	QZ4	7085	5450	126.00	812.00	298.00
10.00-20	7.5/8.0-20	LB 003	6000	5000	164.10	1027.00	254.00
12.00-20	8.0-20	LB 003	7500	6250	202.00	1085.00	281.00

TYRE CONSTRUCTION

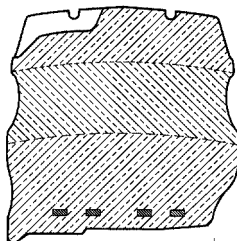


Tread Compound: a purpose formulated compound utilizing premium grades of natural rubber providing maximum abrasion resistance, optimum tear strength and low rolling resistance.

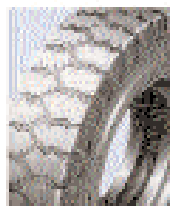
Centre Compound: also formulated from natural rubber to provide maximum shock absorption and low heat build up over long distances.

Base Compound: a specially developed compound incorporating high tensile creel bead technology ensuring a secure and safe fitment to the wheel.

*Available in Limpet



QZ2



QZ4



RIB



LB003



All specifications are in accordance with ETRTO (European Tyre and Rim Technical Organisation).
For further information please contact the Watts Technical Department



Watts

Watts Industrial Tyres

Church Road, Lydney, Glos. GL15 5EN UK

Tel: +44 (0)1594 847100 Fax: +44 (0) 1594 842429

E-mail: industrial@watts-tyres.co.uk

Visit us at www.industrialtyre.com