

PREMIA

INDUSTRIAL SOLID TYRES

First we developed KARGO - the competition followed. Next there was K2 - the competition followed. Now there is the PREMIA - no competition! Extensive independent field tests prove conclusively that PREMIA tread life lasts up to 25% longer than other leading industrial tyres, performing better in wet conditions, with greater stability. The performance parameters of materials handling machines are constantly being pushed to the limit in areas of torque, engine output, power shift transmission and fast acceleration.



CHARACTERISTICS & BENEFITS

- 100% Natural Rubber Content
- Three Compound Construction
- Excellent Shock Absorption
- Creel Beads to Prevent Rim Slippage
- Square Tread Profile
- Large Footprint Reducing Ground Pressure
- Low Rolling Resistance
- Designed For Both Long & Short Haul Applications
- Suitable For Both Split and Lock Ring Type Wheels
- Also Available in 'Limpet'

Watts R&D engineers and rubber technologists draw upon past knowledge and experience to keep pace with new demands from industry, ensuring that Watts maintains the competitive edge and their customers have access to the most

100% performance - 0% downtime

APPLICATIONS

- High Performance Fork Lift Trucks
- Access Equipment
- All Materials Handling applications
- Port, Ro-Ro
- Ground Support Equipment
- Trailers

sophisticated solution available for the toughest applications.



Watts
Industrial Tyres

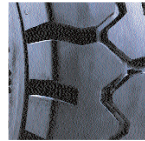
Moving on Success

P R E M I A S P E C I F I C A T I O N S

SIZE	RIM WIDTH	TREAD PATTERN	LOAD CAPACITY FORK LIFT TRUCKS		NOMINAL DIMENSIONS	
			LOAD WHEELS kg	STEER WHEELS kg	OVERALL WIDTH	OVERALL DIAM.
15X4.5-8	3.00	RIB	1040	800	114	377
5.00 - 8	3.00	TIB	1420	1090	121	449
16 x 6 - 8	4.33 R-8	TIB	1270	975	151	441
18 x 7 - 8	4.33 R-8	TIB	2145	1650	147	455
~140/55 - 9	4.00 E-9	TIB	1170	900	128	377
6.00 - 9	4.00 E-9	TIB	1885	1450	142	526
21 X 8-9	6.00 E-9	TIB	2760	2120	201	528
200/50 - 10	6.50 F-10	TIB	2470	1900	194	456
23 x 9 - 10	6.50 F-10	TIB	3160	2430	209	582
6.50 - 10	5.00 F-10	TIB	2340	1800	167	570
~23 X 10-12	8.00 G-12	TIB	3770	2900	234	584
~27 X 10-12	8.00 G-12	TIB	3900	3000	230	670
7.00 - 12	5.00 S-12	TIB	2920	2240	168	656
7.00 - 15	5.5 - 15	TIB	3545	2725	198	724
28 x 9 - 15 (8.15 - 15)	7.0 - 15	TIB	3445	2650	207	691
8.25 - 15	6.50	TIB	4750	3650	201	808
250 - 15	7.00 - 15	TIB	4754	3650	213	712
250 - 15	7.50 - 15	TIB	4754	3650	213	712
300 - 15	8.0 - 15	TIB	5850	4500	241	812
350 - 15 **(32 x 12.1 - 15 / 355/65 - 15)	8.00	TIB	7085	5450	302	825
SIZE	RIM WIDTH	TREAD PATTERN	LOAD WHEELS	STEER WHEELS	WIDTH	DIAM.

All sizes available in Standard and Limpet

All specifications are in accordance with ETRTO (European Tyre & Rim Technical Organisation).

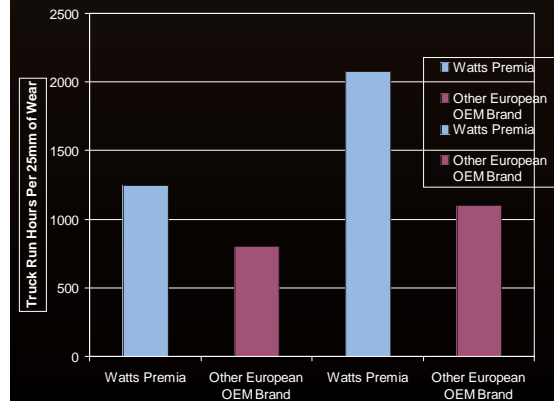


TIB

Features and Benfits

- Optimised tread depth benchmarked against other leading competitors.
- Up to 25% greater wear resistance guaranteeing the best cost per running hour ratio in the solid tyre industry.
- State of the art tread compound utilizing premium grades of natural rubber.
- Maximum abrasion resistance on all floor conditions
- Optimum tear strength to maximise resistance to chipping and chunking.
- Reduced rolling resistance increasing battery life and efficiency of LPG/Diesel powered machines.
- Resilient centre compound encapsulated by tread rubber for enhanced protection.
- Maximum shock absorption reducing costly truck maintenance whilst increaseing driver comfort and ride quality.
- Super-base compound accomodating high tensile creel beads.
- Very high resistance to heat build up, essential at the interface between base and centre compound.
- Maximum hardness resulting in exceptional stability and lower deflection.
- Increased torque resistance ensuring secure and safe fitment to the wheel.
- Powerful twin interblock design.
- Increased traction and greater water dispersion in wet conditions.
- Square tread profile and high lug to void ratio.
- Increased footprint resulting in lower kgs/cm2 ground pressure readings enhancing wear and minimising heat build up.
- Square side wall profile
- Enhances stability and increased side wall strength reducing radial cracking on smaller sizes prone to overload.

DISTRIBUTED BY:



Independent Test carried out by a major UK Fork Truck Distributor



Watts Industrial Tyres

Church Road, Lydney, Glos GL15 5EN, U.K.

Tel: +44 (0) 1594 847100 Fax: +44 (0) 1594 842429

E-mail industrial@watts-tyres.co.uk

www.industrialtyre.com